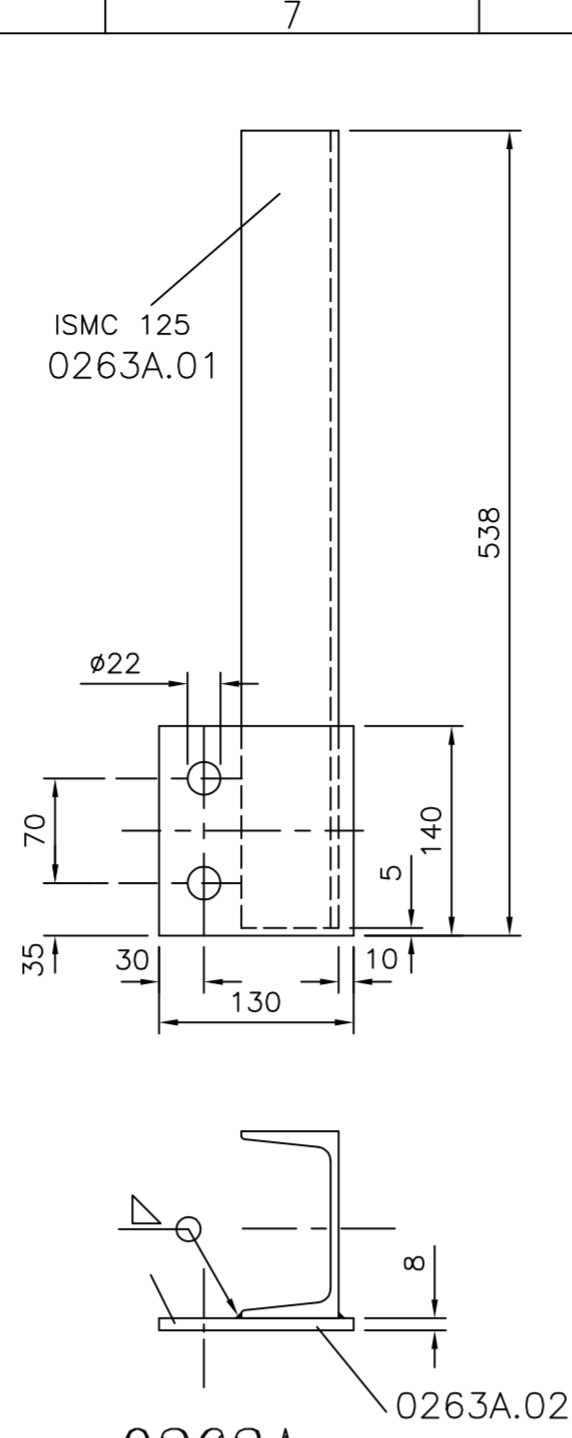


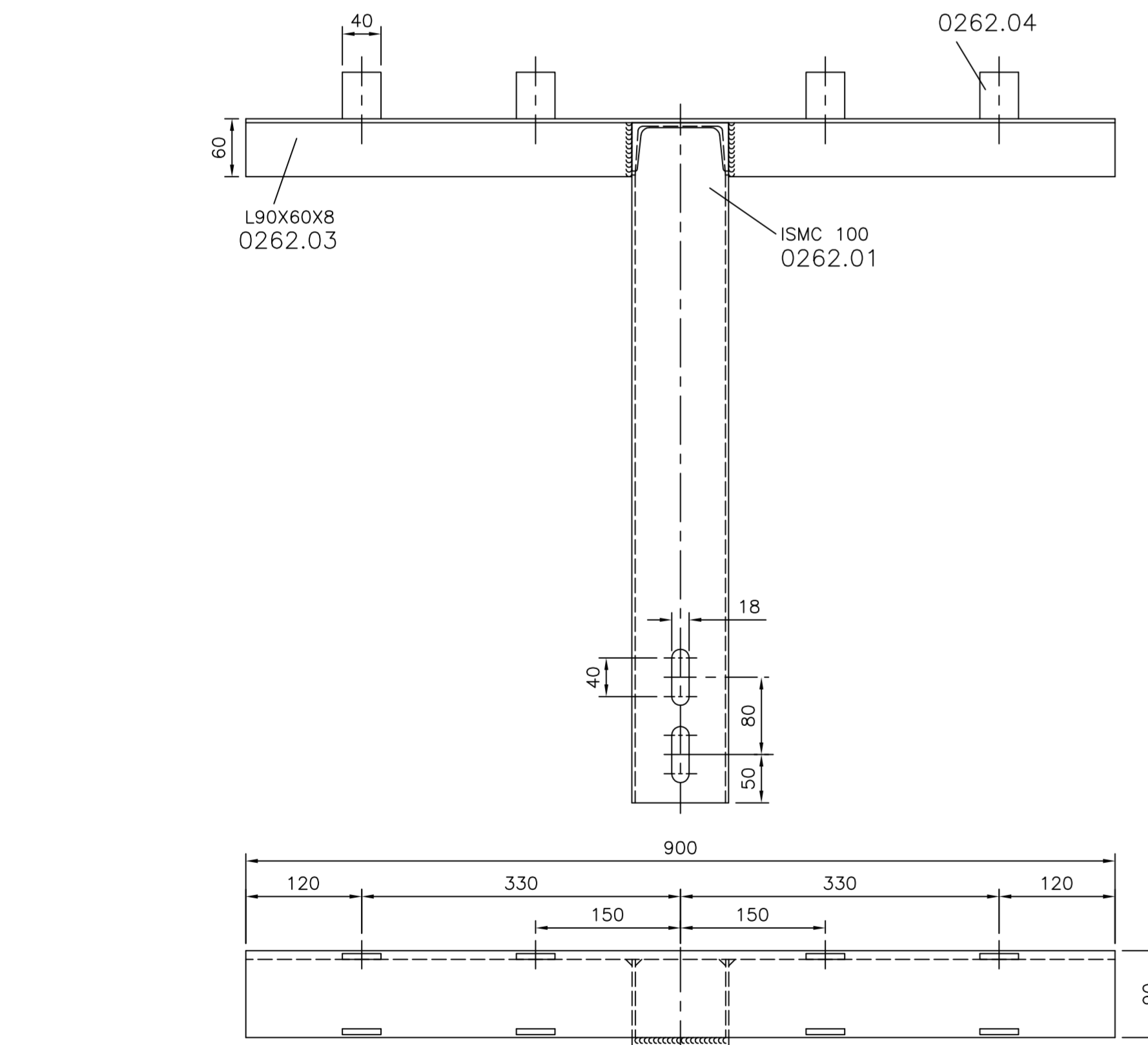
DETAIL - X
SCALE 1:2.5



0263A
SUPPORT FOR CONTROL VALVE FOR INLET HEADERS (0313)
SCALE 1:5

*** ~39 FOR 56 ELEMENTS
*** ~36 FOR 57 ELEMENTS
*** ~33 FOR 58 ELEMENTS
*** ~30 FOR 59 ELEMENTS
*** ~107 FOR 60 ELEMENTS

NOTE:-
ALL PRESSURE BOLTS (PART 0211) SHALL BE ASSEMBLED AT SHOP BY HAND TIGHTENING (WITHOUT ANY HELP OF TOOLS).



0262
SUPPORT FOR INLET HEADERS (0313/0314)
SCALE 1:5

* PART NO.270.01 ARE REQUIRED ONLY WHEN 49 & 50 NOS. CELL ELEMENTS ARE INSTALLED.
** PART NO.227 ARE REQUIRED ONLY WHEN 56 & 60 NOS. CELL ELEMENTS ARE INSTALLED.

EN ISO 13920	NOMINAL MEASURE					
	2 TO 30	30 TO 120	120 TO 400	400 TO 1000	1000 TO 2000	2000 TO 4000
CLASS	PERMISSIBLE DEVIATION					
A	±1	±1	±1	±2	±3	±4

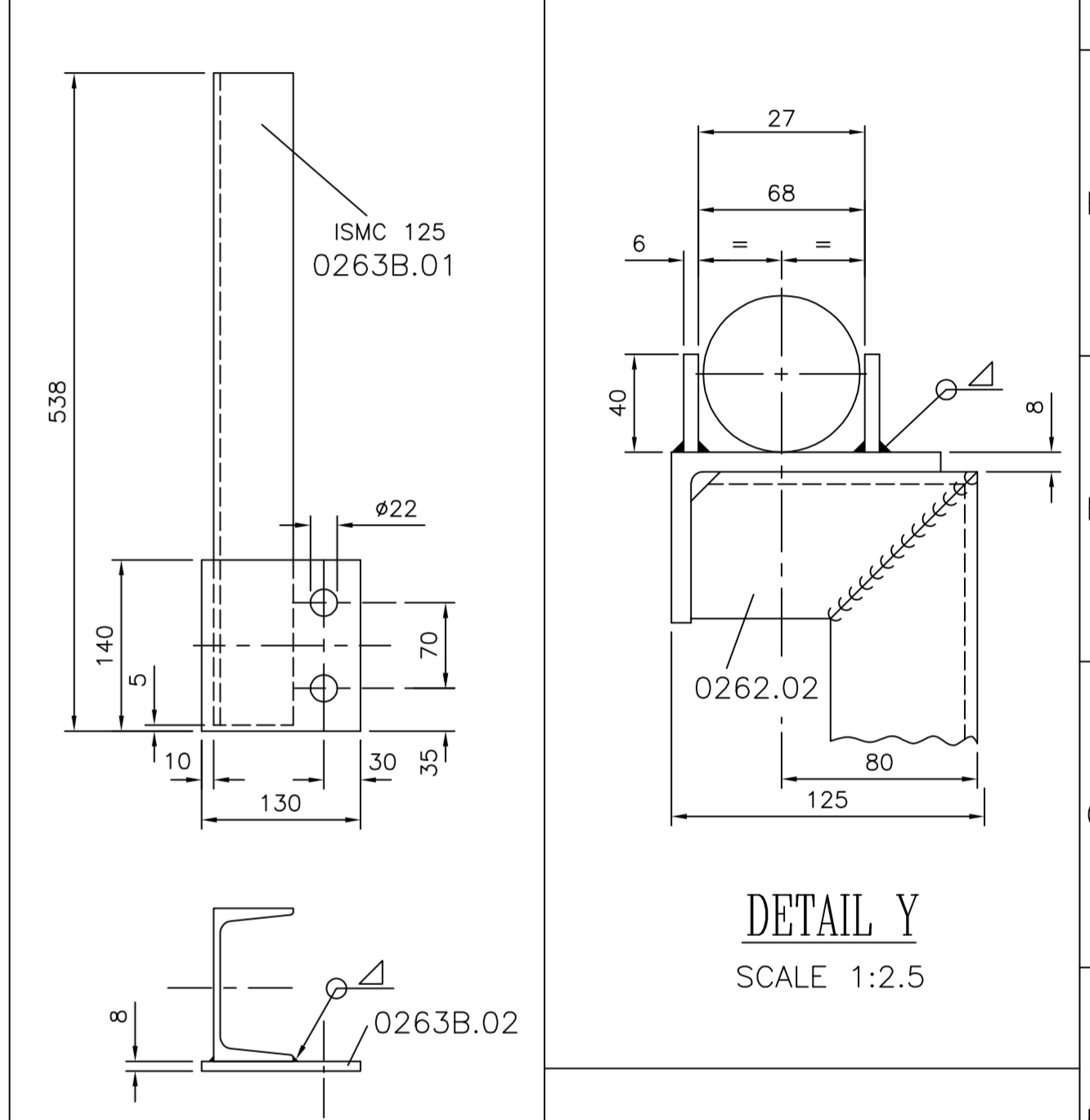
QUANTITIES GIVEN FOR ONE ELECTROLYSER NO. OF ELECTROLYSERS = 6 Nos.

REFERENCE DRG. NO. 0215-EQS-11-TB-0001 SHT. 1/2.
REFERENCE DRG. NO. 0215-EQS-11-TB-0051.

QTY.	DESCRIPTION	PART NO.	MATERIAL	DRG. NO./STD.	WEIGHT (Kgs.)	
-	-	INTERMEDIATE PLATE (DUMMY ARRANGEMENT)	-	REFER DRG.	0215-EQS-11-TB-0002 (3/3) 446	
-	288	HEX. NUT M16 (WITH WASHER FACE)	0502	IS 1367 LUBED HIGH TENSILE Gr.12.9 BLACK	DIN EN ISO 4032 9.17	
-	144	BELLEVILLE WASHERS 16	0501	CS C60/75	DIN 6796 69.24	
-	-	PERSONAL PROTECTION	0400	REFER DRG.	0215-EQS-11-TB-0008 435	
22	108	CAP	0293	UP GM 201 WHITE DIN EN 60893 (=HM 2471 DIN 7735) / HM 2472	0215-EQS-11-TB-0016 -	
7	40	WASHER 8.4	0292	IS 2062 GRE 250 A A2E 13	DIN 9021 OR EQ. 0.2	
7	40	HEX. NUT M8	0291	IS1367CL5.8 A2E 13	IS 1364 0.21	
7	40	HEX.SOC.COUNTER SUNK HEAD SCREW, M8 x 40 Lg.	0290	IS1367CL5.8 A2E 13	IS 1365 0.49	
-	-	SCREWS AS REQUIRED	0289	SS 304	0215-EQS-11-TB-0011	
-	-	SLOTTED PVC DUCT 75W x 40H	0288	PVC	0215-EQS-11-TB-0011	
-	16	INSULATION SLEEVE	0287A	UP GM 201 WHITE DIN EN 60893 (=HM 2471 DIN 7735) / HM 2472	0215-EQS-11-TB-0004 0.08	
3	8	WASHER 8.4	0283	IS 2062 GRE 250 A A2E 13	DIN125 OR EQ. 0.06	
3	8	HEX. NUT M8	0282	IS1367CL.5 A2E 13	IS 1364 0.26	
3	8	HEX. BOLT M8x30	0281	IS1367CL5.8 A2E 13	IS 1364 0.26	
-	2	TIGHTENING SEQUENCE PLATE	0280	PVC	0215-EQS-11-TB-0013 0.13	
-	9	FLEXIBLE BUSBAR	0270.01	SE-CU	0215-EQS-11-TB-0010 208.62	
-	8	INSULATION PLATE	0268	UP GM 201 WHITE DIN EN 60893 (=HM 2471 DIN 7735) / HM 2472	0215-EQS-11-TB-0004 2.56	
-	32	INSULATION SLEEVE	0267	UP GM 201 WHITE DIN EN 60893 (=HM 2471 DIN 7735) / HM 2472	0215-EQS-11-TB-0004 0.29	
12	208	HEX. BOLT M16x55	0265	IS1367CL8.8 A2E 13	IS 1364 27.73	
4	4	FIXING PLATE	0263B.02	IS 2062 GRE 250 A	140 X 130 X 8 THK. 4.57	
4	4	ISMC 125	0263B.01	IS 2062 GRE 250 A	533 LG. 27.93	
4	4	FIXING PLATE	0263A.02	IS 2062 GRE 250 A	140 X 130 X 8 THK. 4.57	
4	4	ISMC 125	0263A.01	IS 2062 GRE 250 A	533 LG. 27.93	
-	128	STOPPER PLATE	0262.04	IS 2062 GRE 250 A	40 X 40 X 6 10.0	
-	16	L 90 X 60 X 8	0262.03	IS 2062 GRE 250 A	900 LG. 128.16	
-	16	ISMC 100	0262.02	IS 2062 GRE 250 A	117 LG. 17.9	
-	16	ISMC 100	0262.01	IS 2062 GRE 250 A	708 LG. 108.3	
1**	6	SUPPORT FOR PART 0312	0261	REFER DRG.	0215-EQS-11-TB-0007 61.2	
1**	3	SUPPORT FOR PART 0311	0260A	REFER DRG.	0215-EQS-11-TB-0007 30.9	
1**	3	SUPPORT FOR PART 0311	0260	REFER DRG.	0215-EQS-11-TB-0007 31.8	
-	4	GUIDE RAIL	0250	UP GM 201 WHITE DIN EN 60893 (=HM 2471 DIN 7735) / HM 2472	0215-EQS-11-TB-0015 34.4	
3	108	HEX. SOCKET HEAD CAP SCREW M6x40	0249	IS1367CL8.8 A2E 13	IS 2269 0.8	
2	12	HEX. SOCKET HEAD CAP SCREW M8x35	0245	IS1367CL8.8 A2E 13	IS 2269 0.15	
3	108	HEX. NUT M6	0243	IS 2062 GRE 250 A A2E 13	IS 1364 1.18	
5	216	WASHER 6.4	0242	IS 2062 GRE 250 A A2E 13	DIN 125 1.08	
2	12	SQUARE TAPER WASHER 9	0239	IS 2062 GRE 250 A A2E 13	IS 5372 0.12	
13	428	HEX. NUT M8	0238	IS1367CL.5 A2E 13	IS 1364 2.9	
13	416	COUNTER SUNK HEAD SCREW M8x30	0237	IS1367CL5.8 A2E 13	IS 1365 5.3	
13	416	WASHER 8.4	0236	IS 2062 GRE 250 A A2E 13	DIN 125 OR EQ. 4.8	
9	288	FLAT WASHER (4mm THICK)	0235	IS 2062 GRE 250 A A2E 13	DIN 125 3.25	
3	108	HEX. BOLT M16x80	0234	IS 1367 LUBED HIGH TENSILE Gr.12.9 BLACK	DIN 931 15.0	
8	284	WASHER A17	0233	IS 2062 GRE 250 A A2E 13	0215-EQS-11-TB-0007 6.0	
15	200	HEX. NUT M16	0232	IS1367CL.8 A2E 13	IS 1364 6.8	
4	36	HEX. BOLT M16x100	0231	IS 1367 LUBED HIGH TENSILE Gr.12.9 BLACK	DIN 931 7.2	
-	20	INSULATOR	0230	CASTING RESIN	0215-EQS-11-TB-0005 6	
-	9	FLEXIBLE BUSBAR	0229	SE-CU	0215-EQS-11-TB-0010 54.9	
4	12	SQUARE TAPER WASHER 18	0228	IS 2062 GRE 250 A A2E 13	IS 5372 0.38	
-	9	BUSBAR	0227	E-CU	0215-EQS-11-TB-0012 -	
-	2	BUSBAR	0226	E-CU	0215-EQS-11-TB-0012 144.36	
-	9	FLEXIBLE BUSBAR	0223B	SE-CU	0215-EQS-11-TB-0010 91.89	
-	9	FLEXIBLE BUSBAR	0223A	SE-CU	0215-EQS-11-TB-0010 90.9	
-	2	CATHODE BUSBAR	0222B	E-CU	0215-EQS-11-TB-0009 14.8	
-	16	CATHODE BUSBAR	0222A	E-CU	0215-EQS-11-TB-0009 236.8	
-	2	ANODE BUSBAR	0221B	E-CU	0215-EQS-11-TB-0009 14.8	
-	16	ANODE BUSBAR	0221A	E-CU	0215-EQS-11-TB-0009 236.8	
-	12	EARTHQUAKE SAFETY DEVICE	0219	ST 37-2	0215-EQS-11-TB-0017 198.36	
-	8	EARTHQUAKE SAFETY DEVICE	0218	ST 37-2	0215-EQS-11-TB-0017 180.16	
-	1	ERECTION TEMPLATE	0217	AISI 304	0215-EQS-11-TB-0006 0.26	
-	54	INSULATING DISC	0216	UP GM 201 WHITE DIN EN 60893 (=HM 2471 DIN 7735) / HM 2472	0215-EQS-11-TB-0004 10.8	
-	54	PRESSURE PLATE	0215	IS 2062 GRE 250 A A2E 13	0215-EQS-11-TB-0006 124.2	
26	1296	CONICAL SPRING 34/16.3/1.5 GR.2	0214	50 Cr V 4	0215-EQS-11-TB-0014 10.4	
5	54	WASHER	0213	IS 2062 GRE 250 A A2E 13	0215-EQS-11-TB-0006 6.48	
-	81	DISTANCE PIECE	0212B	IS 2062 GRE 250 A A2E 13	0215-EQS-11-TB-0006 64.8	
-	81	DISTANCE PIECE	0212A	IS 2062 GRE 250 A A2E 13	0215-EQS-11-TB-0006 32.4	
-	54	PRESSURE BOLT	0211	SA193 GR.B7 A2E 13	0215-EQS-11-TB-0006 89.1	
-	2	INSULATING PLATE	0210	UP GM 201 WHITE DIN EN 60893 (=HM 2471 DIN 7735) / HM 2472	0215-EQS-11-TB-0004 10.2	
-	144	PRESSURE PLATE	0208	SS 316	0215-EQS-11-TB-0007 36	
4	12	INSULATOR	0207	CASTING RESIN	0215-EQS-11-TB-0005 6.96	
4	12	GROUND PLATE	0212	REFER DRG.	0215-EQS-11-TB-0007 61.2	
-	12	RACK INSULATOR	0205	CASTING RESIN	0215-EQS-11-TB-0005 18	
-	4	PRESSURE PLATE	0202	REFER DRG.	0215-EQS-11-TB-0003 80.8	
-	2	CELL RACK	0201	REFER DRG.	0215-EQS-11-TB-0002 (1/3) 5840	
SPARE	QTY.	DESCRIPTION	PART NO.	MATERIAL	DRG. NO./STD.	WEIGHT (Kgs.)
**	-	SPARE RUBBER PAD ONLY.	-	-	-	TOTAL WEIGHT : ~10050 Kgs.

GENERAL NOTES:-

- ALL FILLET WELDS SHALL BE 5mm MINIMUM UNLESS OTHERWISE SPECIFIED.
- ALL DIMENSIONS ARE IN mm. UNLESS OTHERWISE SPECIFIED.
- SURFACE PREPARATION:-BLAST CLEANING TO SWEDISH. STD. Sa 2 1/2 FINISH. PAINTING:-ONE COAT OF INORGANIC ZINC SILICATE PRIMER OF 75 MICRONS D.F.T. INERT PIGMENT/EPOXY RESIN 60 MICRONS D.F.T. AS FIRST TOP COAT AND 65 MICRONS D.F.T. AS SECOND TOP COAT. TOTAL D.F.T. 200 MICRONS. COLOUR OF TOP COAT - SKY BLUE (RAL 5015). VENDOR SHALL SHOW SAMPLE COLOUR TO THIS INSPECTOR BEFORE ORDERING.
- ALL TAPPED HOLES SHALL BE FILLED WITH GREASE.
- INSPECTION BY :- THIS INDIA / CLIENT.
- CONICAL SPRINGS (ITEM NO. 0214) SHALL BE PHOSPHATE TREATED AND OILED.
- THESE NOTES ARE APPLICABLE FOR ALL PART DRAWINGS ALSO.
- ALL MATERIALS SHALL BE SUPPLIED WITH TEST CERTIFICATES.
- THE THREADING OF ALL FASTENERS SHALL BE METRIC.
- SPRING WASHERS (PART NO. 0235) SHALL BE TESTED AS PER PROCEDURE GIVEN BELOW:-
LOAD TEST WITH 10 WASHERS FACE TO FACE ARRANGED WITH FLAT DISC BETWEEN EACH WASHER, LOAD TO BE APPLIED = 7500 Kgs. TEST TIME = 48 HRS. TEST RESULTS = 1) NO CRACKS 2) HEIGHT OF WASHER MIN. 4.58 mm.
- ALL BOLT LENGTHS SPECIFIED ARE EXCLUDING HEXAGONAL HEAD HEIGHT.
- GENERAL TOLERANCES ACCORDING TO DIN-ISO-2768m-PART 1 IN ADDITION TO SPECIFIC TOLERANCES MENTIONED IN THE APPLICABLE DRAWINGS. IN CASE OF CONFLICT, STRINGENT OF THE TWO WILL BE APPLICABLE.
- ALL BOLTS, NUTS, WASHERS, SLOTTED COUNTER SUNK HEAD SCREW ETC. (EXCEPT CONICAL SPRING ITEM NO.0214) SHALL BE ZINC COATED TO A2E ACCORDING TO DIN 267.
A2E MEANS : A - ZINC ELECTROPLATED COATING,
2 - MIN. THICKNESS OF COATING IS 5 MICRONS/COAT.
E - SEMI BRIGHT FINISH WITH NO COLOUR.
A2E SHALL BE ACCORDING TO EN 4042.



0263B
SUPPORT FOR CONTROL VALVE FOR INLET HEADERS (0314)
SCALE 1:5

Contract No. 66-0215-700	Document ID Code 0215-EQS-11-TB-0001	Part Rev. 001 00								
Store Location: Server/Share \\p660215-Add	BAR-Code									
Store Location: Folder \\660215-Add\Acad\Loss(Drg)\Mechanical\Cell Rack										
Store Name 02008-2.dwg										
Pro. Unit 11	Con. Unit -	TON 11A01AN-FNZ01								
Group -	Order No. -	Type of Document TB								
Sheet 2	/ 2									
PROJECT: 300 TPD CONVERSION PROJECT		Description 0200B DETAILS CELL RACK AND CURRENT SUPPLY CELL ELEMENT GENERATION V6								
Drawn 29.10.2018	Date SRT	Name								
Prepared 29.10.2018	Date ADV	Name								
Checked 05.11.2018	Date GBP	Name								
Approved 06.11.2018	Date GBP	Name								
Scale -	Cat. Code 5	Acc. Code -								
Status -										
00	29.10.18	SRT	ADV	05.11.18	GBP	06.11.18	GBP	ISSUED FOR ENQUIRY	Acc. Code	