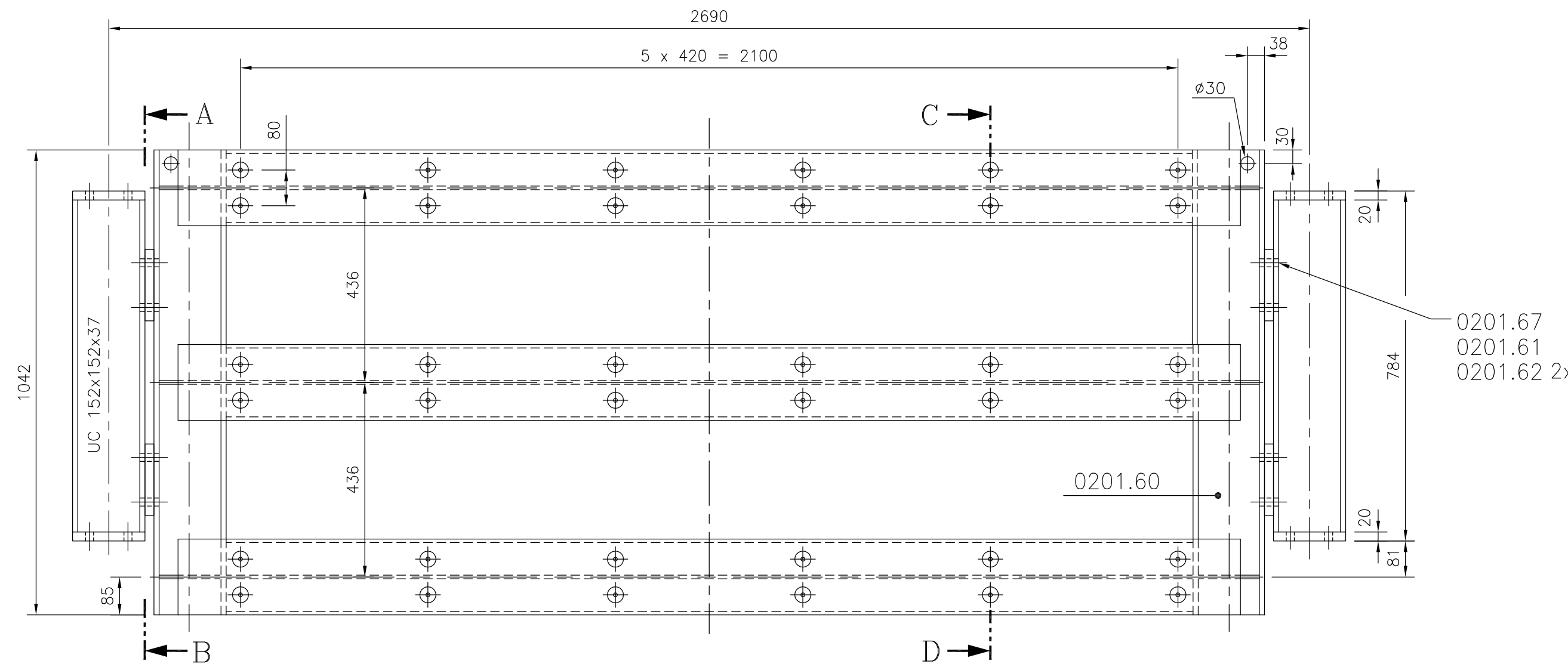
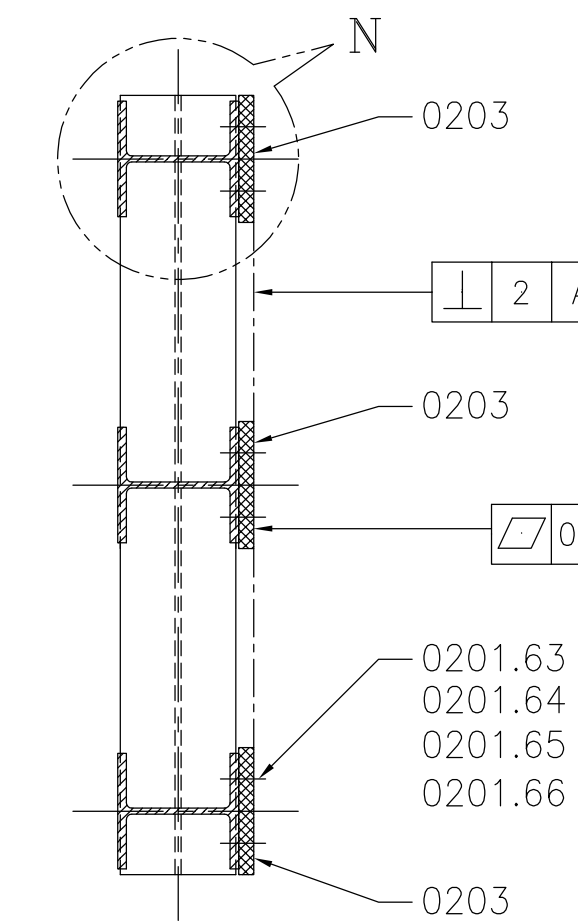


SECTION A-B

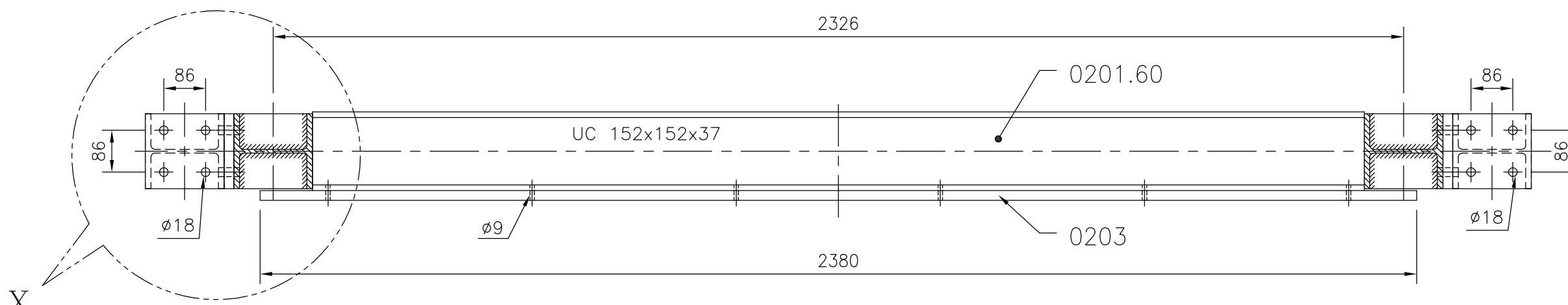


ELEVATION



SECTION C-D

HORIZONTAL
REFERENCE DWG. No.
0215-EQS-11-TB-0002
SHEET 1 OF 3
(ELEVATION)



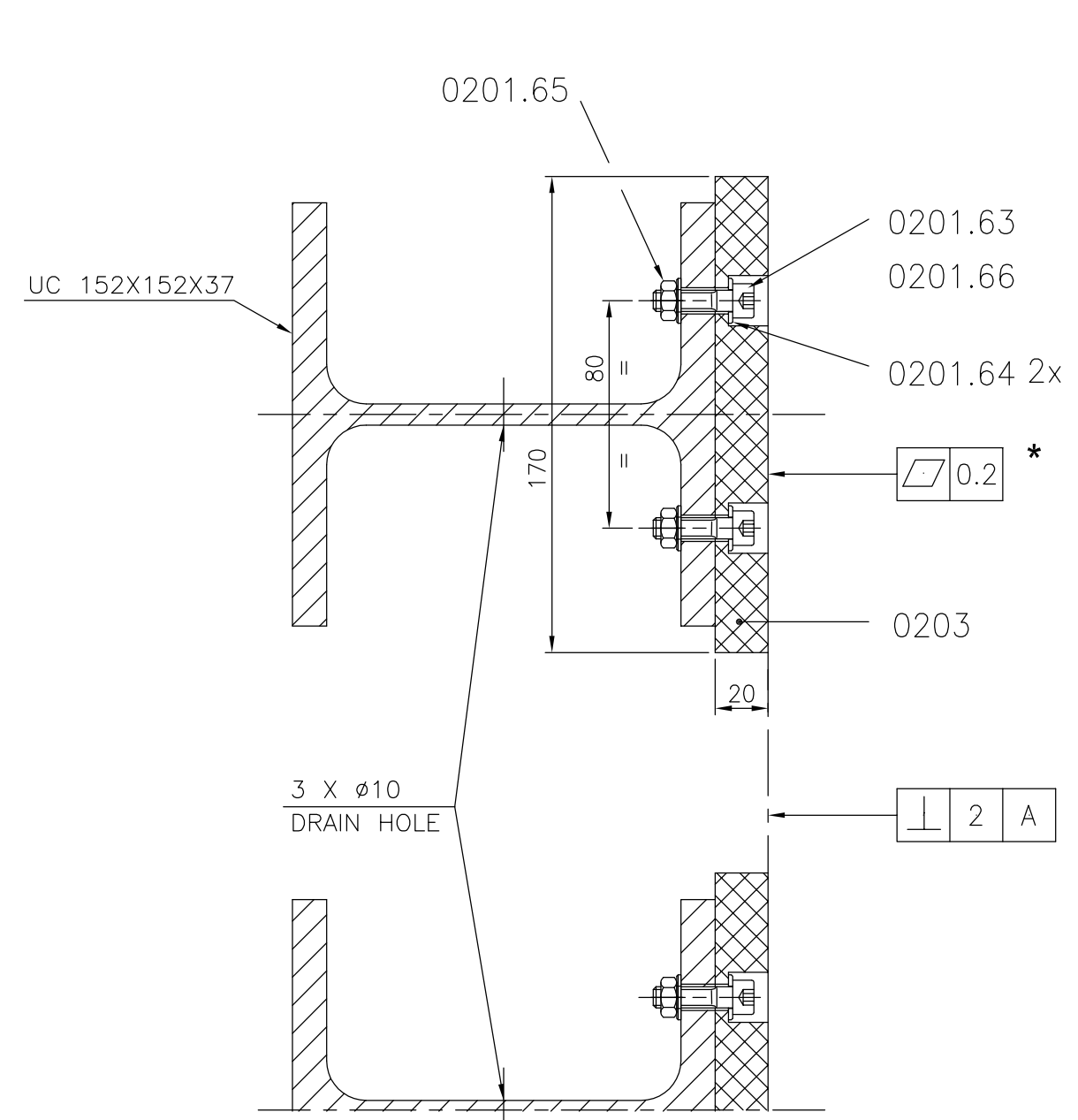
PLAN

P.NO.	DESCRIPTION	QTY.	MATERIAL	DIMENSIONS / STANDARD	WEIGHT/Kgs.
0203	INSULATION PLATE	03	UP GM 201 WHITE DIN EN 60893 (+HM 2471 DIN 7735) / HM 2472	170 x 20 THK. x 2380	32.3
0201.94	WASHER A17	32	IS 1367GR.10 (HOT DIP GALVANIZED COATING)	DIN 6916	0.7
0201.93	HEX NUT M16	16	IS 1367GR.10 (HOT DIP GALVANIZED COATING)	IS 1364	0.5
0201.92	HEX.BOLT M16x60	16	IS 1367GR.10.9 (HOT DIP GALVANIZED COATING)	IS 1364	1.9
0201.91	PLATE	04	IS 2062 GR.E 250A	162 x 154 x 20 THK.	15.68
0201.69	PLATE	04	IS 2062 GR.E 250A	160 x 154 x 20 THK.	15.47
0201.68	BEAM	02	IS 2062 GR.E 250A	UC 152 x 152 x 744 Lg.	55.1
0201.67	HEXAGONAL BOLT M16x75	16	IS 1367GR.10.9 (HOT DIP GALVANIZED COATING)	M16x75 Lg.(IS 1364)	3.0
0201.66	CAP	36	UP GM 201 WHITE DIN EN 60893 (+HM 2471 DIN 7735) / HM 2472	0215-EQS-11-TB-0016	
0201.65	HEXAGONAL NUT (M8)	36	IS1367CL.8 (A2E) 4	M8 (ISO 4032)	0.3
0201.64	WASHER 8.4	72	IS 2062 GR.E 250A	8.4 (ISO 7089)	0.2
0201.63	HEX.SOC.HEAD CAP SCREW M8x30	36	IS1367CL.8.8 (A2E) 4	M8x30 Lg.(DIN 7984)	0.14
0201.62	WASHER 17	32	IS 1367GR.10 (HOT DIP GALVANIZED COATING)	(DIN 6916 OR EQ.)	0.46
0201.61	HEXAGONAL NUT (M16)	16	IS 1367GR.10 (HOT DIP GALVANIZED COATING)	M16 (IS 1364)	0.7
0201.60	INTERMEDIATE FRAME	01	IS 2062 GR.E 250A	UC 152 x 152 x 8576 LG.	318
TOTAL WEIGHT :					~446

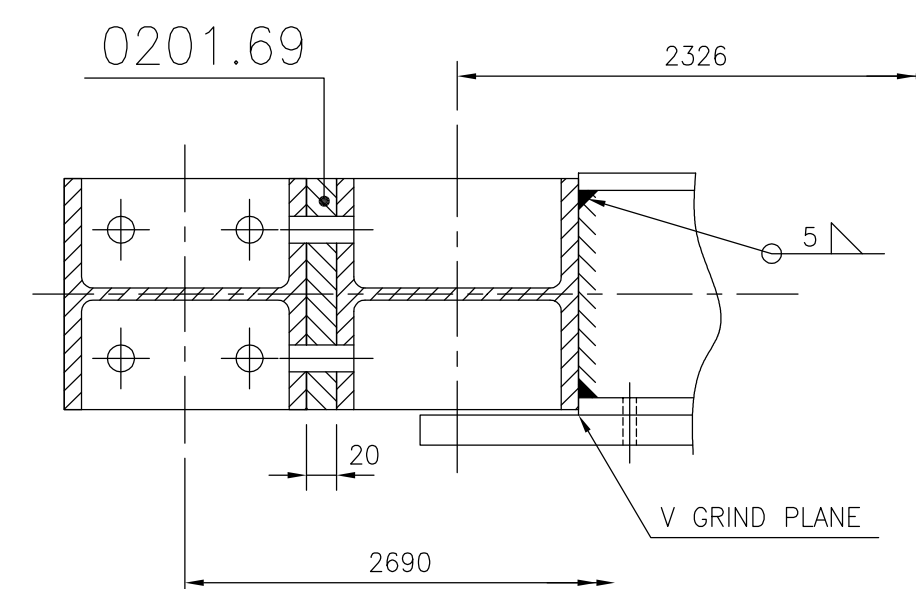
NOTES:

- 1) QUANTITY MENTIONED IS FOR ONE ELECTROLYSER ONLY.
- 2) FOR PAINTING REFER DRG. NO. 0215-EQS-11-TB-0002 SHT. 1/3.
- 3) FOR PART No. 0203 REFER DRG. No. 0215-EQS-11-TB-0004.
- 4) A2E MEANS : A - ZINC ELECTROPLATED COATING,
2 - MIN. THICKNESS OF COATING IS 5 MICRONS/COAT.
E - SEMI BRIGHT FINISH WITH NO COLOUR.
A2E SHALL BE ACCORDING TO DIN 267/IS1367 PART 11, 2002 EDITION.

REFERENCE DRG NO. 0215-EQS-11-TB-0001



DETAIL - N



DETAIL - X

STRAIGHTEN ALL UC 152x152x37 AND FRONT PLATES IN BOLTED CONNECTING AREAS, FRAMES AND FRONT PLATES TO BE WELDED ON 152x152x37 WITH $\Delta a=5$.

* TO FULFIL THE TOLERANCE REQUIREMENTS (DETAIL 'N') MACHINE THE BEAMS IN THE CONNECTING AREA OF THE INSULATION PLATES.

AFTER THAT THE 3 BEAMS MUST FORM A COMMON SURFACE WHICH IS IN ACCORDANCE WITH THE TOLERANCES.

0203 WILL BE ASSEMBLED AT SITE.
ALL BOLTS MUST BE SUNKED AT LEAST 3 mm IN INSULATING PLATES.

DUMMY ARRANGMENT IS REQUIRED ONLY FOR INSTALLATION OF 49 OR 50 CELL ELEMENTS. FOR INSTALLATION OF 56 OR 60 CELL ELEMENTS, DUMMY ARRANGMENT SHALL BE REMOVED AND KEPT SEPARATELY IN LOOSE CONDITION.

Rev.	Date	Name	ADV	Date	Name	Date	Name	Description	Acc. Code
00	29.10.18	SRT	ADV	05.11.18	GBP	06.11.18	GBP	ISSUED FOR ENQUIRY	
		Drawn/Prepared			Checked		Approved		

CONFIDENTIAL

The information in this document is strictly private, confidential and should not be copied, distributed or reproduced in whole or in part, nor passed to any third party without the prior approval of tkIS-India.

tkIS - India / Owner/Client

tkIS - India / Owner/Client

Category Codes (Submission purpose):

- 1 For Approval
- 2 For Review / Comments
- 3 For Information
- 4 For Engineering
- 5 For Enquiry
- 6 For Order Placement
- 7 Final & Approved
- 8 Released for Construction

Acceptance Codes (Approval Codes):

- 1 Approved
- 2 Approved for Manufacturing/ Fabrication With Comments as Marked
- 3 Not Approved/Resubmit
- 4 Retained for Information/Records
- 5 Reviewed
- 6 Reviewed as Noted/Resubmit

Date: ___/___/___ Name: _____

Contract No. **66-0215-700** Document ID **0215-EQS-11-TB-0002** Part Rev. **002 00**

Store Location: Server/Share \\p660215-Ada
Store Location: Folder \\660215-Ada\Acad\Issued\Org\Mechanical\Cell Rack
Store Name 0201.60-INTERMEDIATE PLATE.dwg

Pro. Unit 11 Con. Unit - TON 11A01AN-FNZ01 Group - Order No. - Type of Document TB Sheet 3 / 3

pacl PUNJAB ALKALIES & CHEMICAL LIMITED NAYA NANGAL

thyssenkrupp

PROJECT: 300 TPD CONVERSION PROJECT © thyssenkrupp Industrial Solutions (India) Private Limited 2018

Description: 0201.60 CELL RACK INTERMEDIATE PLATE (DUMMY ARRANGMENT)

Drawn: 29.10.2018 SRT
Prepared: 29.10.2018 ADV f
Checked: 05.11.2018 GBP
Approved: 06.11.2018 GBP

Scale: - Cat. Code: 5 Acc. Code: - Status: -