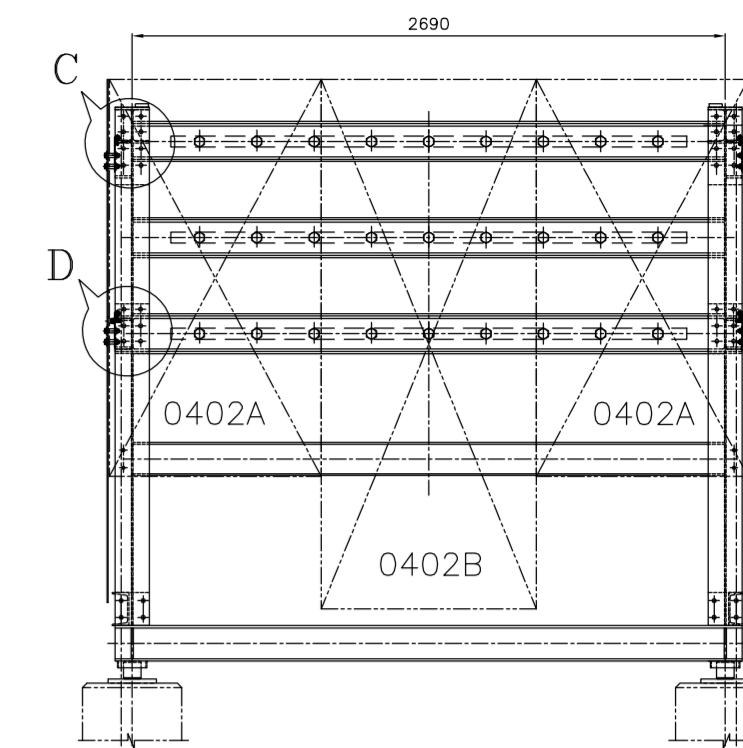
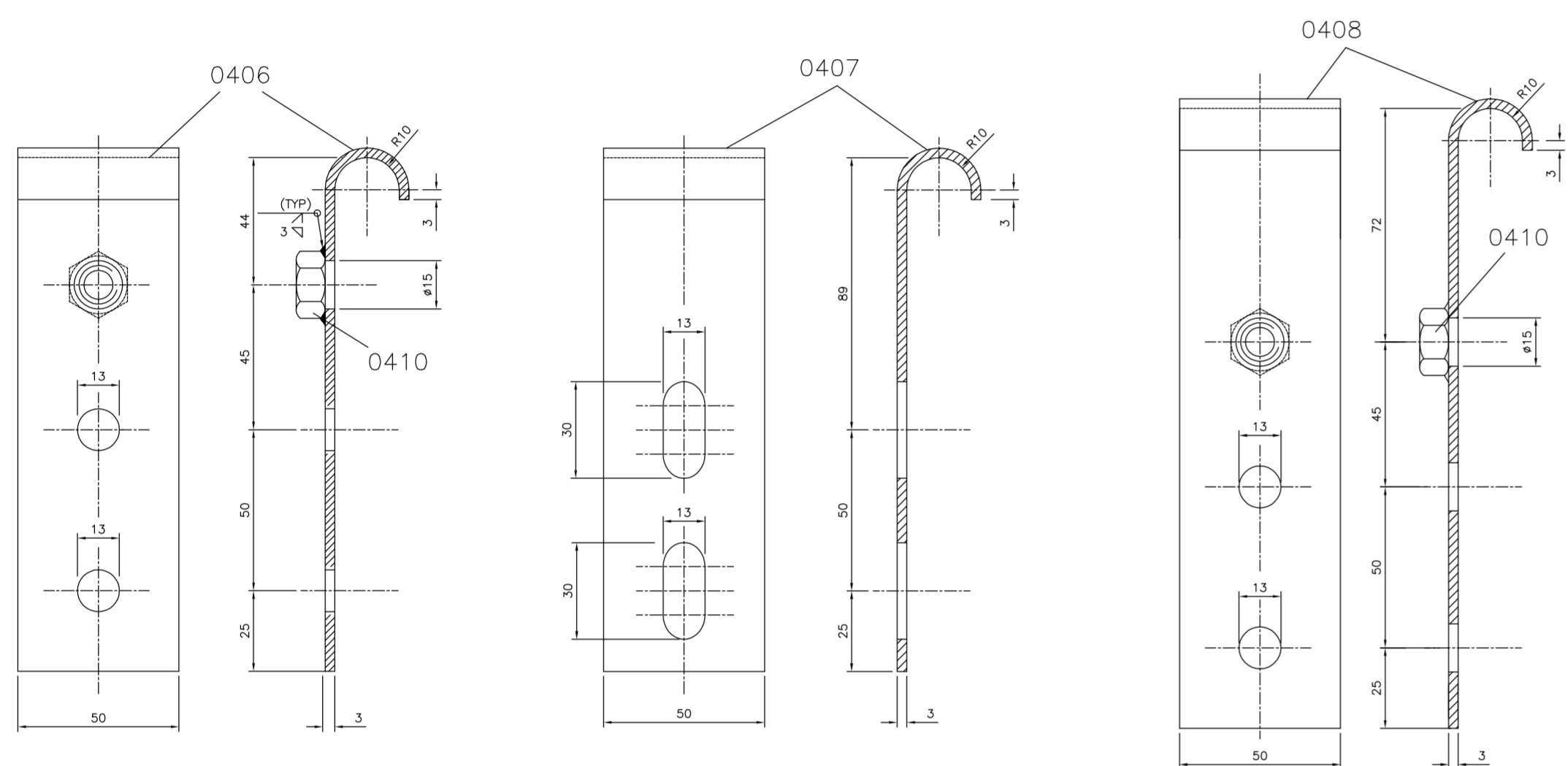


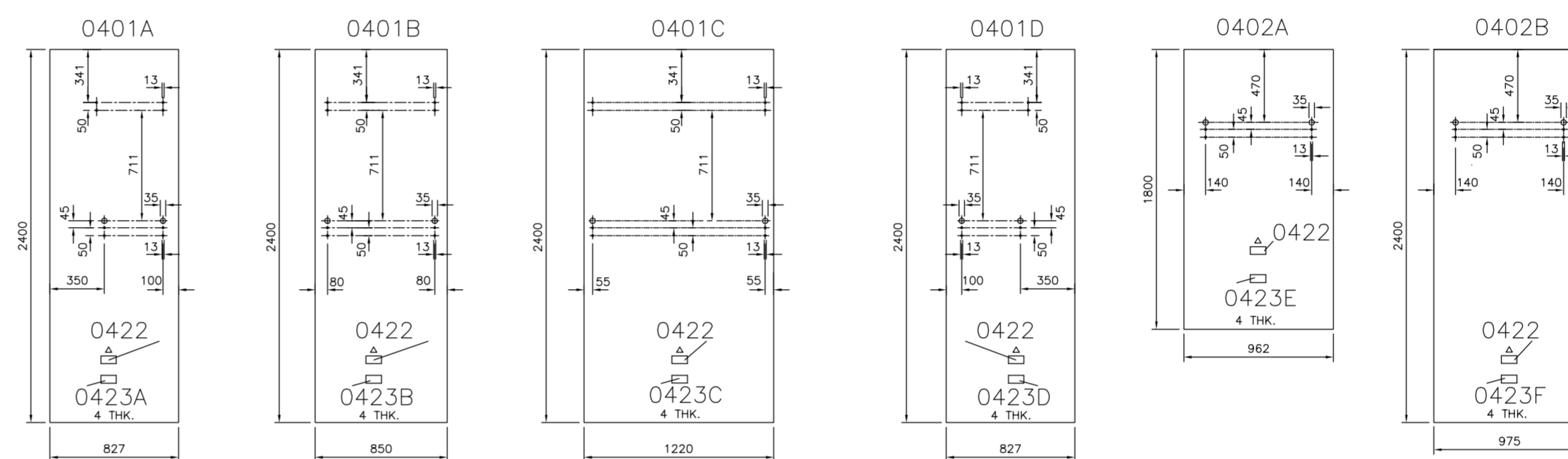
ELEVATION OF ELECTROLYSER
SCALE 1:20



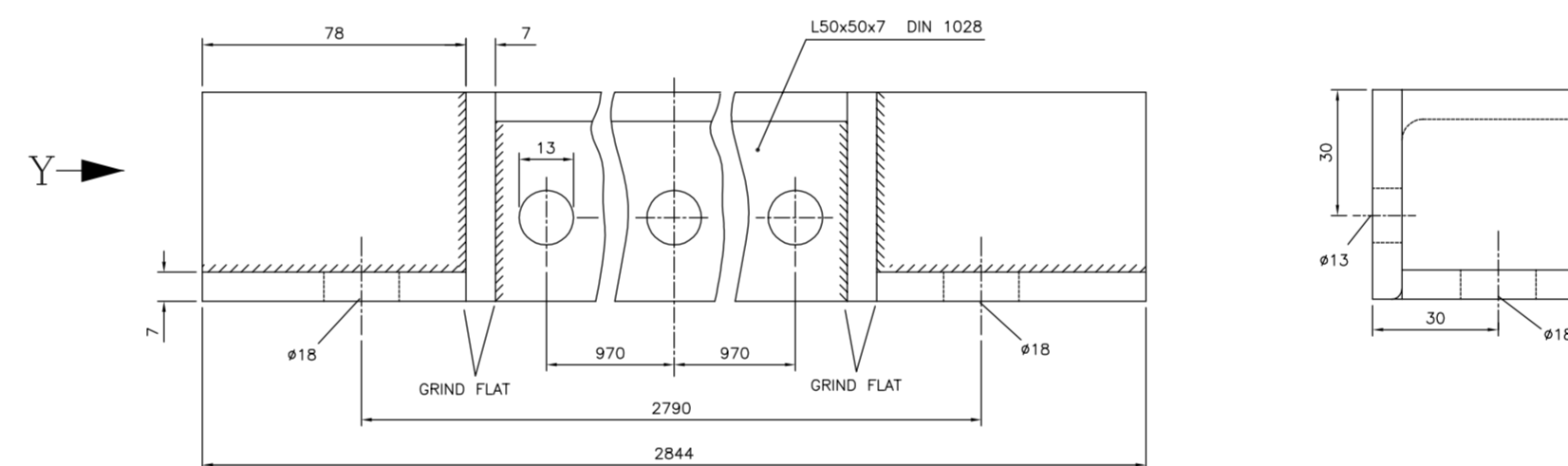
VIEW A-A



PART NOS. 0406, 0407, 0408 & 0410
SCALE 1:1

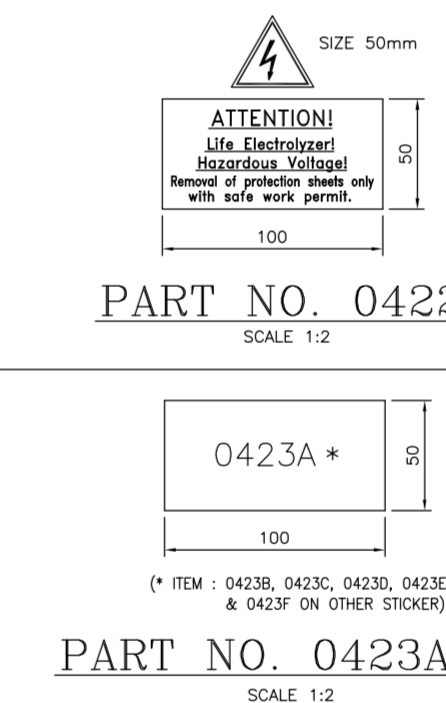


PART NOS. 0401A, 0401B, 0401C, 0401D,
0402A & 0402B
(CAN BE LOCALLY CUT TO CLEAR INSTRUMENTS)
SCALE 1:20



PART NO. 0403
TOP VIEW
SCALE 1:1

VIEW Y



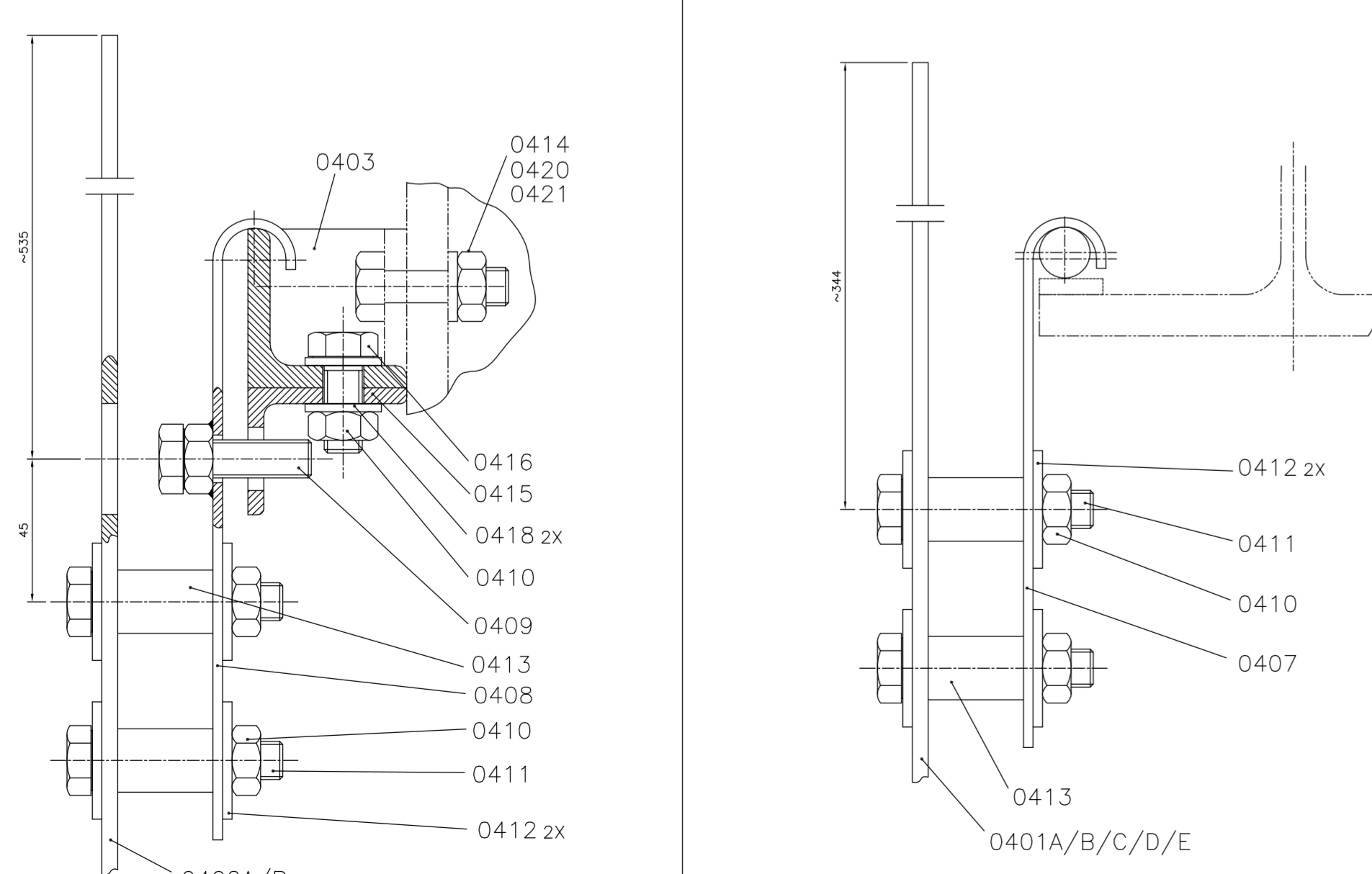
PART NO. 0422
SCALE 1:2

PART NOS. 0423A-F
SCALE 1:2

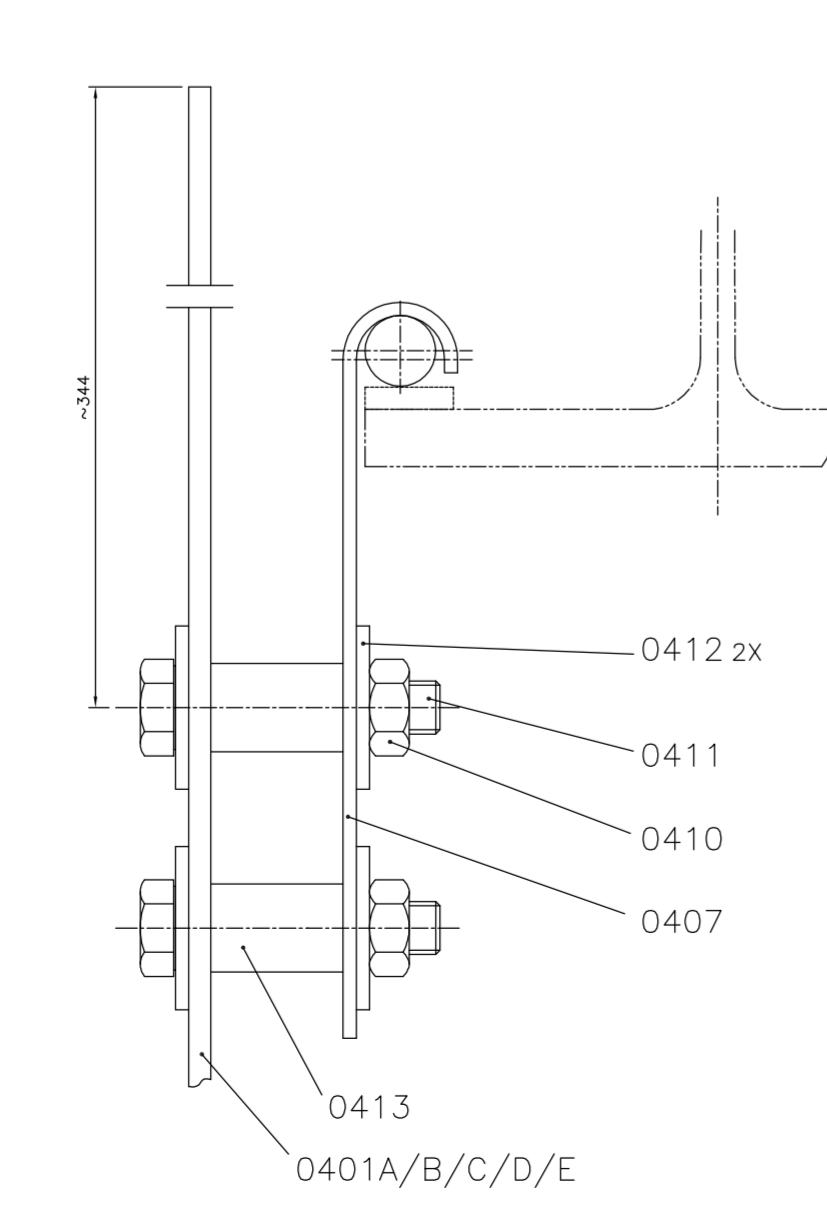
PART NO.	DESCRIPTION	QTY.	MATERIAL	DIMENSIONS / STANDARD	WEIGHT(Kggs.)
0423F	STICKER FOR PART NO.0402B	2			-
0423E	STICKER FOR PART NO.0402A	4			-
0423D	STICKER FOR PART NO.0401D	2			-
0423C	STICKER FOR PART NO.0401C	2			-
0423B	STICKER FOR PART NO.0401B	20			-
0423A	STICKER FOR PART NO.0401A	2			-
0422	WARNING PLATE	32			-
0421	HEXAGONAL NUT M16	4	IS 1367 CL.8 AZE 4	M16 (DIN 934)	0.15
0420	WASHER A17	4	IS 2082 G.E 250A AZE 4	A17 (DIN 125)	0.05
0419	FRAME	2	IS 2082 G.E 250A AZE 4	AS PER DRAWING	17.0
0418	WASHER A13	24	IS 2082 G.E 250A AZE 4	A13 (DIN 125)	0.24
0416	HEXAGONAL BOLT M12	12	IS 1367 CL.5.6 AZE 4	M12 x 40 Lg.(DIN 933)	0.42
0415	ANGLE 50 x 40 x 6THK.	2	IS 2082 G.E 250A AZE 4	2710 Lg.	24.0
0414	HEXAGONAL BOLT M16	4	IS 1367 CL.5.6 AZE 4	M16 x 45 Lg.(DIN 933)	0.6
0413	DISTANCE PIPE	232	PP	Ø20 x 2.5THK. x 30 Lg.	7.21
0412	WASHER A13	464	IS 2082 G.E 250A AZE 4	A13 (DIN 9021)	3.53
0411	HEXAGONAL BOLT M12	232	PA	M12 x 60 Lg.(DIN 931)	5.33
0410	HEXAGONAL NUT M12	308	IS 1367 CL.8 AZE 4	M12 (DIN 934)	1.26
0409	HEXAGONAL BOLT M12	64	PA	M12 x 40 Lg.(DIN 933)	1.28
0408	PROTECTION SHEET CLIP	12	IS 2082 G.E 250A AZE 4	AS PER DRAWING	3.0
0407	PROTECTION SHEET CLIP	52	IS 2082 G.E 250A AZE 4	AS PER DRAWING	11.5
0406	PROTECTION SHEET CLIP	52	IS 2082 G.E 250A AZE 4	AS PER DRAWING	11.5
0403	PROTECTION SHEET SUPPORT	2	IS 2082 G.E 250A AZE 4	AS PER DRAWING	29.7
0402B	PROTECTION SHEET	2	POLY CARBONATE(PC)	AS PER DRAWING	22.5
0402A	PROTECTION SHEET	4	POLY CARBONATE(PC)	AS PER DRAWING	33.7
0401D	PROTECTION SHEET	2	POLY CARBONATE(PC)	AS PER DRAWING	17.8
0401C	PROTECTION SHEET	2	POLY CARBONATE(PC)	AS PER DRAWING	28.1
0401B	PROTECTION SHEET	20	POLY CARBONATE(PC)	AS PER DRAWING	195.90
0401A	PROTECTION SHEET	2	POLY CARBONATE(PC)	AS PER DRAWING	17.8
TOTAL WEIGHT :					~435 Kgs.

NOTES:-

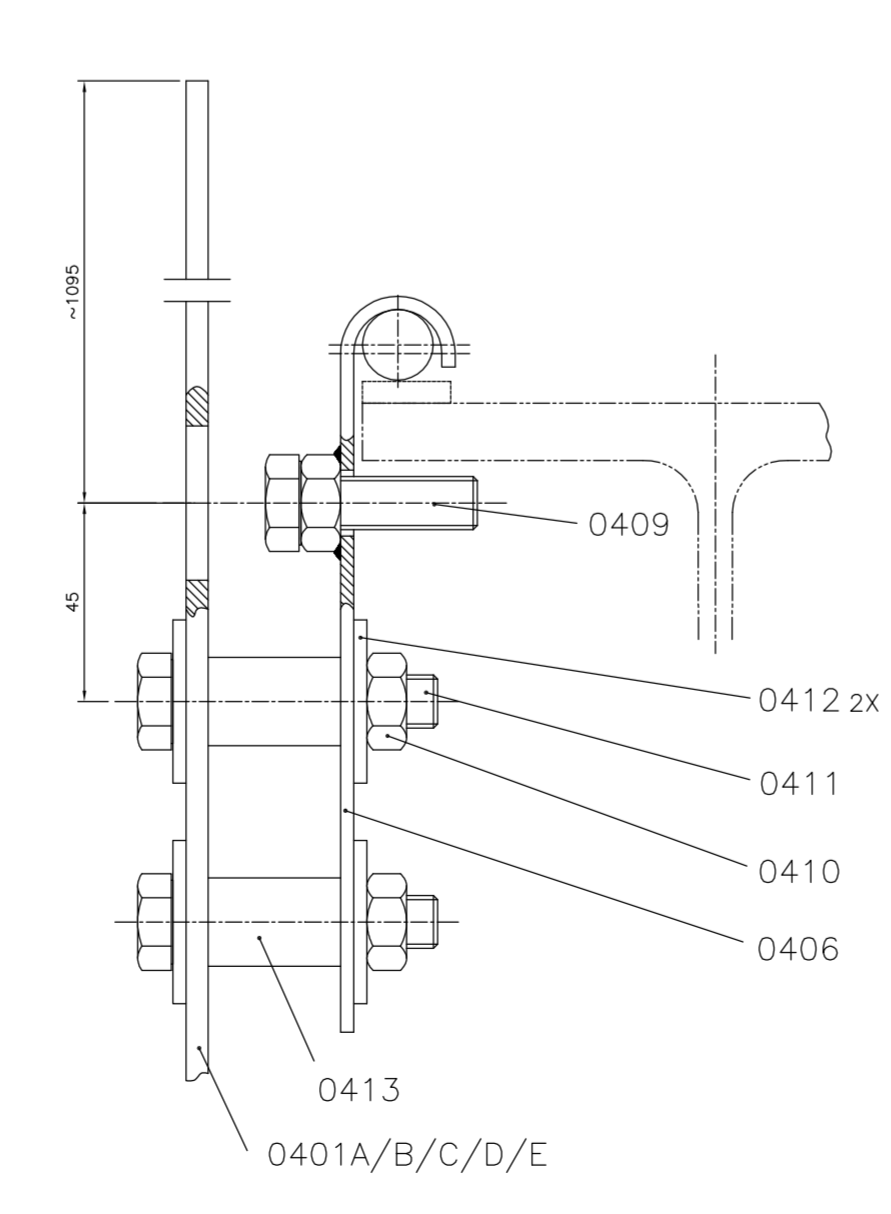
- ALL DIMENSIONS ARE IN mm, UNLESS OTHERWISE SPECIFIED.
 - PARTS 0401A/B/C/D & 0402A/B HAVE TO BE PERMANENT MARKED WITH THE PART NOS. LETTER HIGH = 20 mm WITH WATER PROOF PAINT.
 - UNLESS OTHERWISE SPECIFIED, C.S. PARTS SHALL BE PAINTED ACCORDING TO THE PAINTING SPECIFICATION.
 - AZE MEANS : A - ZINC ELECTROPLATED COATING, 2 - MIN. THICKNESS OF COATING IS 5 MICRONS/COAT. E - SEMI BRIGHT FINISH WITH NO COLOUR. AZE SHALL BE ACCORDING TO EN 4042.
- REFERENCE DRG. NO. 0215-EQS-11-TB-0001.



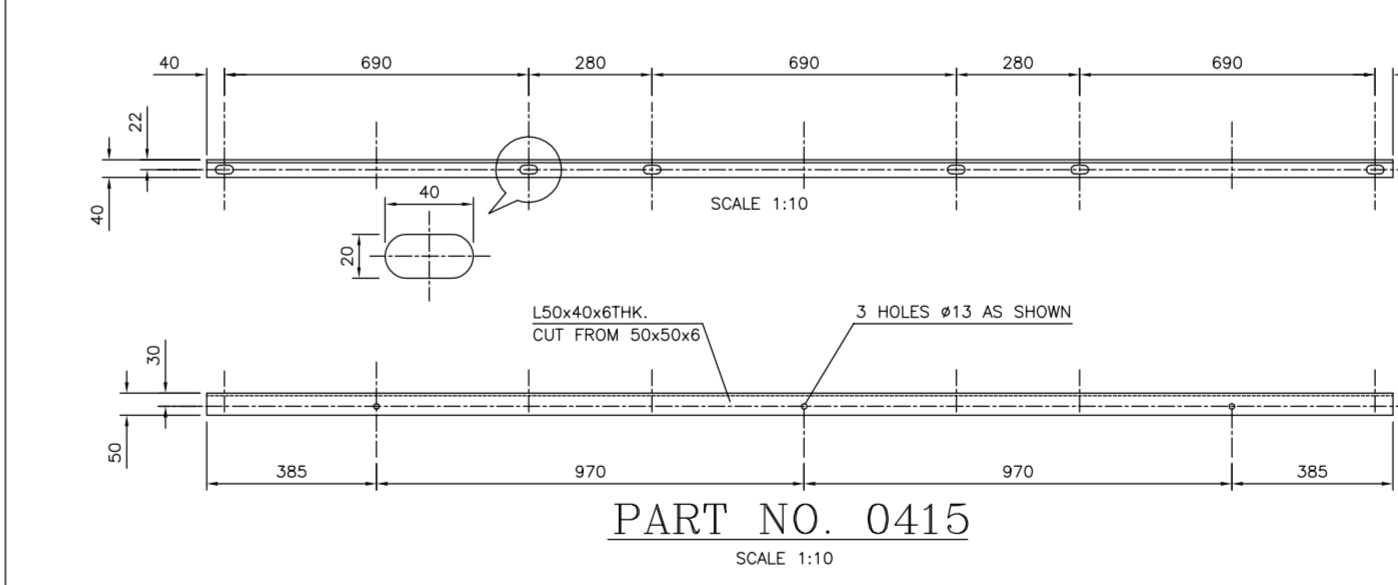
DETAIL B
SCALE 1:1



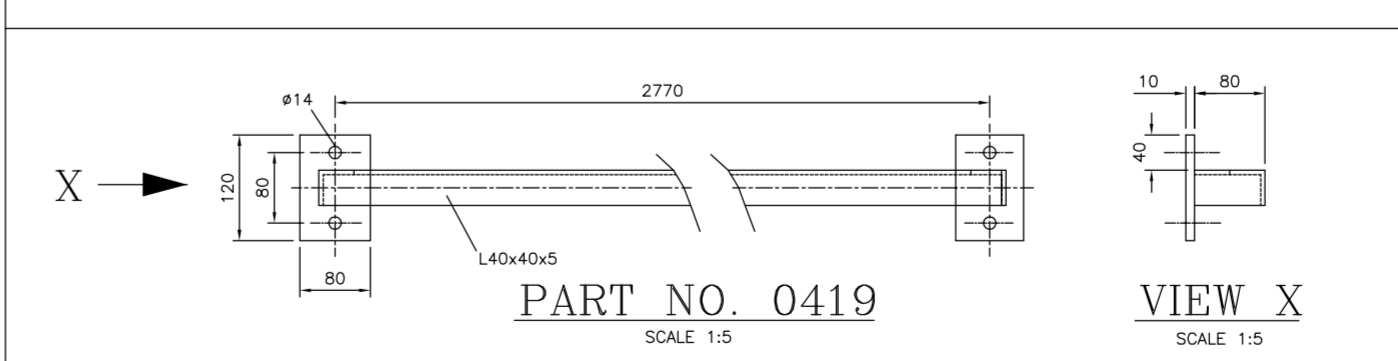
DETAIL C
SCALE 1:1



DETAIL D
SCALE 1:1



PART NO. 0415
SCALE 1:10



PART NO. 0419
SCALE 1:5

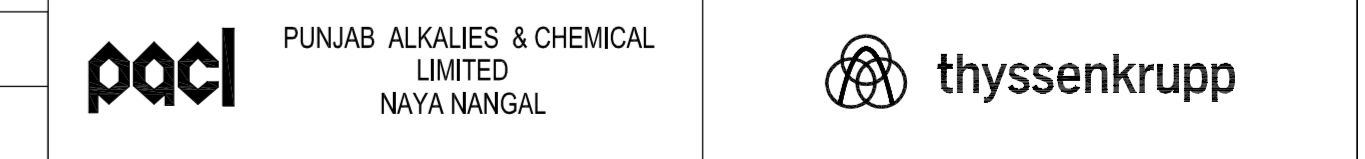
VIEW X
SCALE 1:5

CONFIDENTIAL

The information in this document is strictly private, confidential and should not be copied, distributed or reproduced in whole or in part, nor passed to any third party without the prior approval of tkIS-India.

tkIS - India / Owner/Client		tkIS - India / Owner/Client	
<input type="checkbox"/> 1 For Approval	<input type="checkbox"/> 2 For Review / Comments	<input type="checkbox"/> 1 Approved	<input type="checkbox"/> 2 Approved for Manufacturing/ Fabrication With Comments as Marked
<input type="checkbox"/> 3 For Information	<input type="checkbox"/> 4 For Engineering	<input type="checkbox"/> 3 Not Approved/Resubmit	<input type="checkbox"/> 4 Retained for Information/Records
<input type="checkbox"/> 5 For Enquiry	<input type="checkbox"/> 6 For Order Placement	<input type="checkbox"/> 5 Reviewed	<input type="checkbox"/> 6 Reviewed as Noted/Resubmit
<input type="checkbox"/> 7 Final & Approved	<input type="checkbox"/> 8 Released for Construction	Date: ___/___/___ Name: _____	

Contract No.	66-0215-700	Document ID	0215-EQS-11-TB-0008	Part Rev.	000 00
Store Location:	Server/Share \\p660215-Add	BAR-Code			
Store Location:	Folder \\660215-Add\Local\Local\Mechanical\Cell Rack				
Store Name	0400.dwg				
Pro. Unit	11	Con. Unit	-	TON	11A01AN-FNZ01
Group	-	Order No.	-	Type of Document	TB
Sheet	1				1 / 1



PROJECT:	300 TPD CONVERSION PROJECT	Description	0400 PERSONAL PROTECTION SHEET GENERAL ARRANGEMENT AND DETAILS
Drawn	01.11.2018 SRT	Name	
Prepared	01.11.2018 ADV		
Checked	05.11.2018 GBP		
Approved	06.11.2018 GBP		

Rev.	Date	Name	Date	Name	Date	Name	Description	Acc. Code
00	01.11.18	SRT	05.11.18	GBP	06.11.18	GBP	ISSUED FOR ENQUIRY	
		Drawn/Prepared		Checked		Approved		

Scale	-	Cat. Code	5	Acc. Code	-	Status	-
-------	---	-----------	---	-----------	---	--------	---