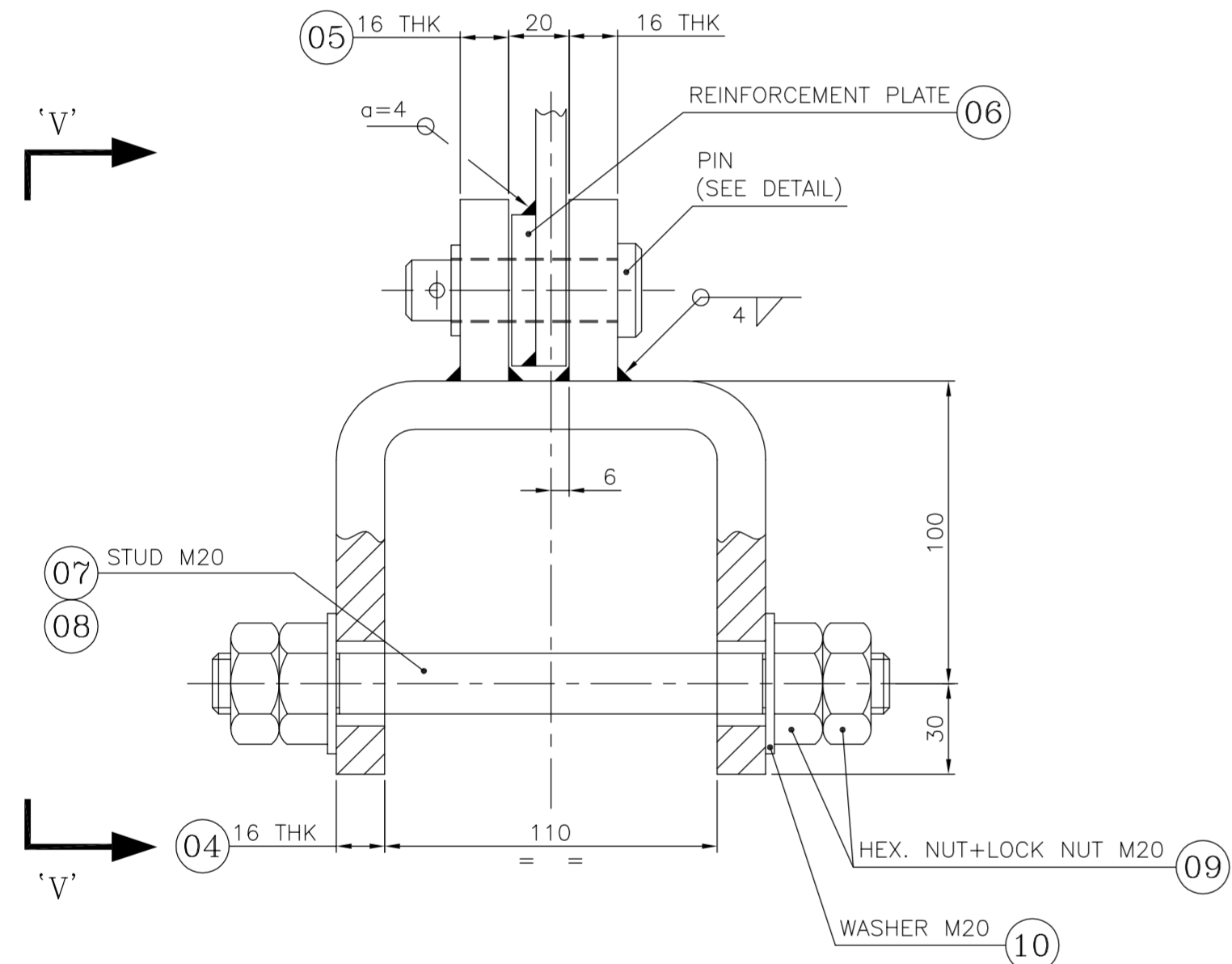
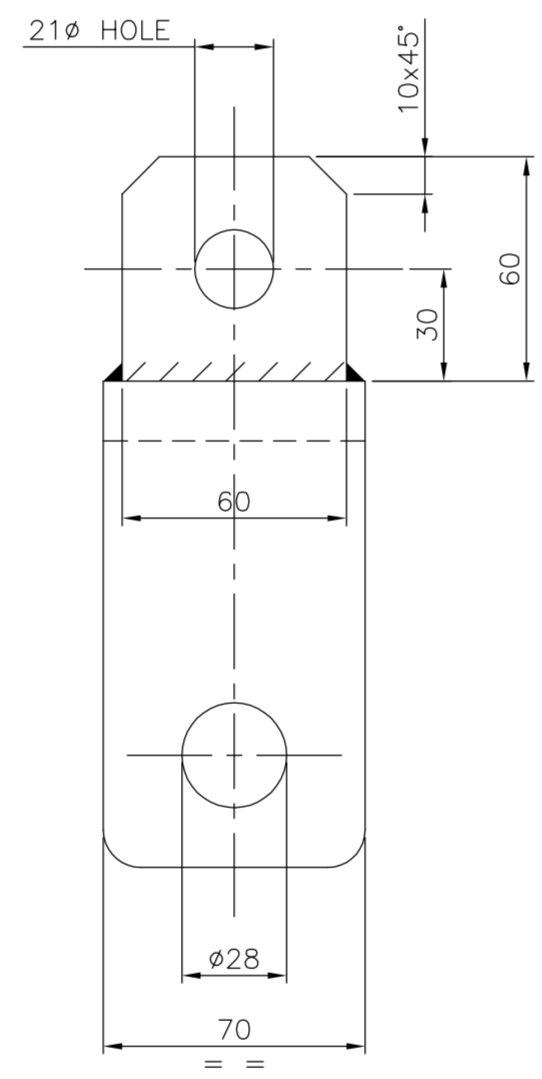


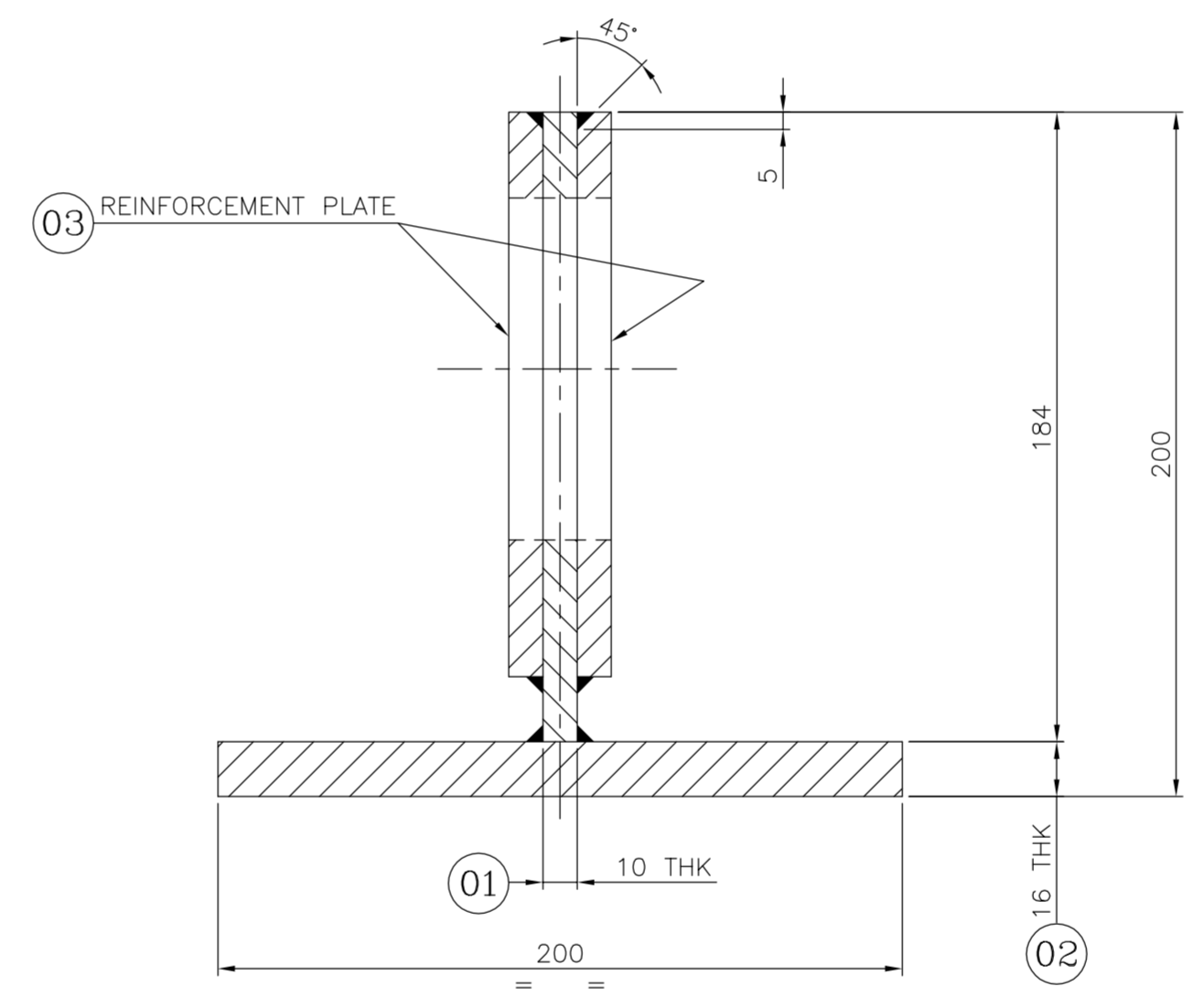
DETAIL OF ELEMENT LIFTING BEAM
(SCALE 1:4)



DETAIL OF SHACKLE
(SCALE 1:2)

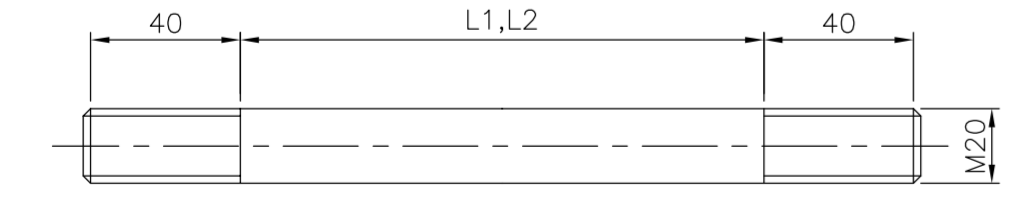


VIEW 'V-V'
(STUD & PIN NOT SHOWN)

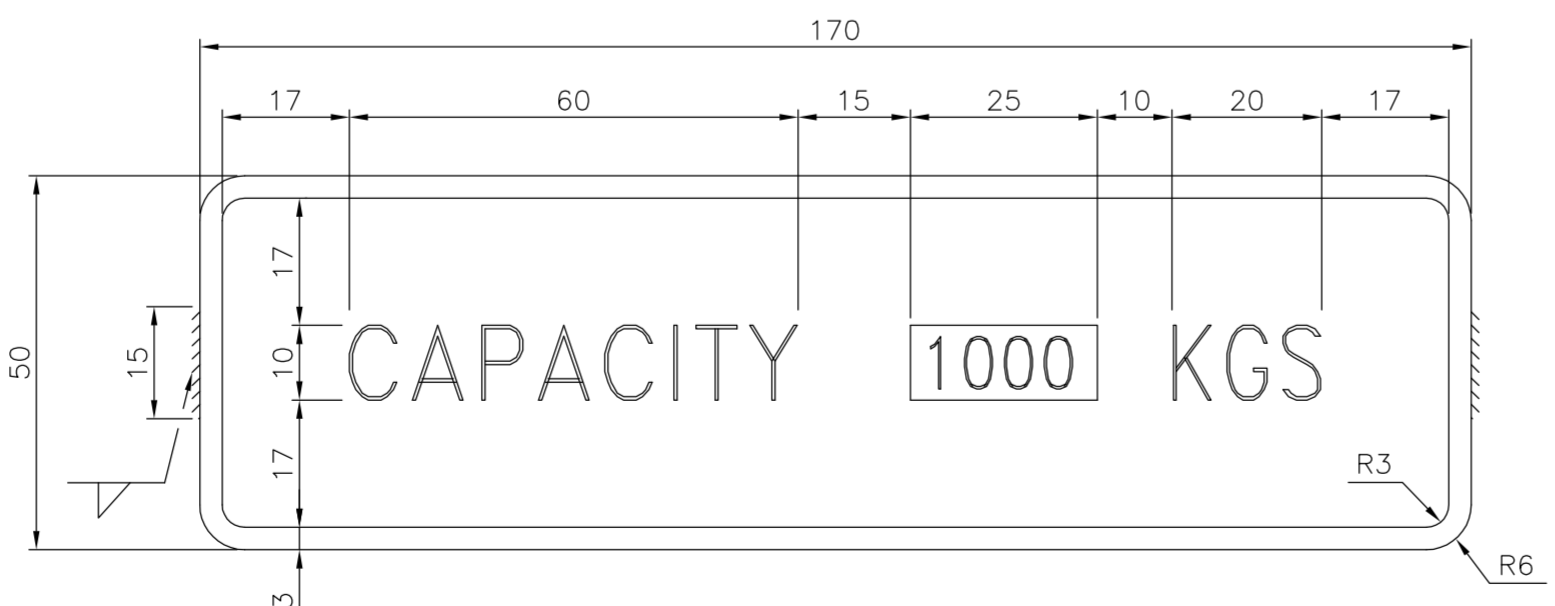


SECTION 'A-A'
(SCALE 1:2)

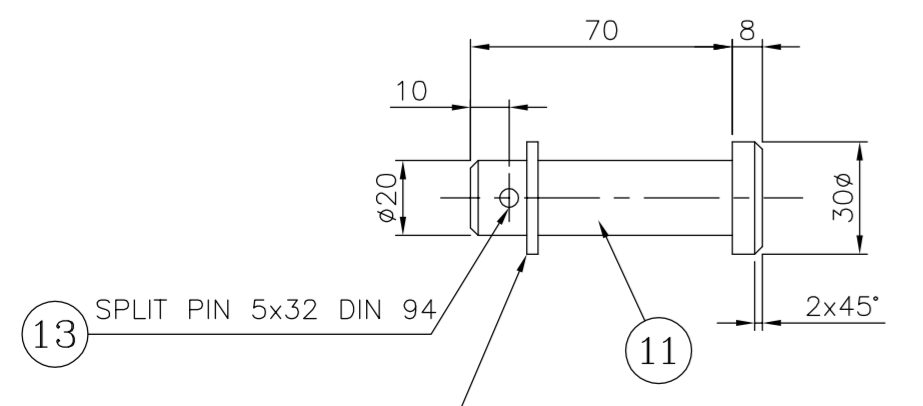
P.NO.	DESCRIPTION	QTY.	MATERIAL	SIZE	REMARK
13	SPLIT PIN	02	IS 2062 GR.E 250 A	5φ X 32 LG.	DIN 94
12	WASHER	02	IS 2062 GR.E 250 A	21φ X 3 THK	IS 2016
11	PIN	02	IS 1367 CL. 4.6	SEE DETAIL	
10	WASHER	04	IS 2062 GR.E 250 A	M20 X 3 THK	IS 2016
09	HEX NUT + LOCK NUT	8+8	IS 1367 CL. 8	M20 STD.	
08	STUD	02	IS 1367 CL. 8.8	M20 X 360 LG.	
07	STUD	02	IS 1367 CL. 8.8	M20 X 220 LG.	
06	REINFORCEMENT PLATE	02	IS 2062 GR.E 250 A	50 X 110 X 8 THK	
05	CLEAT FOR SHACKLE	04	IS 2062 GR.E 250 A	60 X 60 X 16 THK	
04	PLATE FOR SHACKLE	02	IS 2062 GR.E 250 A	~370 X 70 X 16 THK	
03	REINFORCEMENT PLATE	02	IS 2062 GR.E 250 A	165 X 165 X 10 THK	
02	PLATE	01	IS 2062 GR.E 250 A	2130 X 200 X 16 THK	
01	PLATE	01	IS 2062 GR.E 250 A	2740 X 184 X 10 THK	



DETAIL OF STUD
(SCALE 1:2)



NAME PLATE
(SCALE 1:1)



DETAIL OF PIN
(SCALE 1:2)

NOTES:-

- LOAD : 1000 KG (FOR 4 ELEMENTS OR 1 PRESSURE PLATE)
- WEIGHT : 90 Kg.
- HEX. NUTS, STUDS, WASHERS, PINS AND SPLIT PINS TO BE GALVANIZED A2E OR SIMILAR
A2E MEANS : A - ZINC ELECTROPLATED COATING,
2 - MIN. THICKNESS OF COATING IS 5 MICRONS/COAT.
E - SEMI BRIGHT FINISH WITH NO COLOUR.
A2E SHALL BE ACCORDING TO EN 4042.
- QUANTITY : 1 SET.
- SURFACE PREPARATION & PAINTING :
ALL C.S. PARTS EXCLUDING STUD, NUTS & PIN SHALL BE SAND BLASTED TO SA 2.5 FINISH AND PAINTED WITH ONE COAT OF INORGANIC ZINC SILICATE PRIMER OF 75 MICRON D.F.T., INERT PIGMENT / EPOXY RESIN 60 MICRONS D.F.T. AS FIRST TOP COAT AND 65 MICRONS D.F.T. AS SECOND TOP COAT. TOTAL D.F.T. = 200 MICRONS.

NOTES:-

- ALL DIMENSIONS ARE IN mm UNLESS OTHERWISE STATED.
- NAME PLATE
 - MATERIAL STAINLESS STEEL 2mm THICK.
 - NAME PLATE IS TO BE TACK WELDED TO ELEMENT LIFTING BEAM AS SHOWN.
 - THE LETTERS AND NUMBERS SHALL HAVE RAISED POLISHED FACE.
 - BACKGROUND SHALL BE BLACK.

CONFIDENTIAL

The information in this document is strictly private, confidential and should not be copied, distributed or reproduced in whole or in part, nor passed to any third party without the prior approval of tkIS-India.

tkIS - India / Owner/Client

tkIS - India / Owner/Client

Category Codes (Submission purpose):

- 1 For Approval
- 2 For Review / Comments
- 3 For Information
- 4 For Engineering
- 5 For Enquiry
- 6 For Order Placement
- 7 Final & Approved
- 8 Released for Construction

Acceptance Codes (Approval Codes):

- 1 Approved
- 2 Approved for Manufacturing/ Fabrication With Comments as Marked
- 3 Not Approved/Resubmit
- 4 Retained for Information/Records
- 5 Reviewed
- 6 Reviewed as Noted/Resubmit

Date: __/__/__ Name: _____

Contract No. **66-0215-700** Document ID **0215-EQS-11-TB-0035** Part Rev. **000 00**

Store Location: Server/Share \\p660215-Ada
Store Location: Folder \\660215-Ada\Acad\Issued\Org\Mechanical\Cell Rack
Store Name: 12H003.dwg

Pro. Unit: 11 Con. Unit: - TON: 11A01AN-FNZ01 Group: - Order No.: - Type of Document: TB Sheet: 1 / 1

paci PUNJAB ALKALIES & CHEMICAL LIMITED NAYA NANGAL

thyssenkrupp

PROJECT: 300 TPD CONVERSION PROJECT

© thyssenkrupp Industrial Solutions (India) Private Limited 2018

Drawn: 29.10.2018 SRT
Prepared: 29.10.2018 ADV
Checked: 05.11.2018 GBP
Approved: 06.11.2018 GBP

Description: 12H003 DETAILS ELEMENT LIFTING BEAM

Rev.	Date	Name	Date	Name	Date	Name	Description	Acc. Code
00	29.10.18	SRT	05.11.18	GBP	06.11.18	GBP	ISSUED FOR ENQUIRY	
		Drawn/Prepared		Checked		Approved		

ISO A1 50 mm